

2009 Planning Committee Member's Favorite Things to Do in Missoula

The list below is a small sampling of activities, highlights, and restaurants to explore while visiting. Be sure to visit the Missoula Visitor's Center Website: www.missoulacvb.com

Mountain Line – Missoula's city bus
(406) 721-3333
<http://www.mountainline.com/>

Missoulian – Missoula's local paper
www.missoulian.com/

Check out *Lively Times* for more entertainment options
www.livelytimes.com



Visit the University of Montana - Go Griz!

The University of Montana is located just across the river from the Conference Hotel. Explore one of Montana's premier institutions. "Hike the M" just behind Washington Grizzly Stadium for a panoramic view of the valley.

www.umt.edu

Campus Information: 406-243-0211

Art/Culture:

Missoula Children's Theatre (MCT) is the beneficiary of Region 8's service project, and their facility is just up the street from the conference hotel. Swing by for a tour and learn more about this unique program.

200 Adams St.

<http://www.mctinc.org/>

Kyi Yo Pow Wow (April 18th & 19th) – This annual Pow Wow takes place on the University of Montana campus. Those of you arriving early for the conference shouldn't miss it!

<http://www.umt.edu/kyiyo/Powwow.htm>

Missoula Art Museum
335 N. Pattee Street
www.missoulaartmuseum.org

Montana Museum of Art & Culture
U of M Campus – PARTV Center
www.umt.edu/montanamuseum

Area Parks/Close by Hiking:

Mount Sentinel "The M"

Trailhead is on U of M Campus

Reasonable walk or short drive from hotel



Caras Park Downtown

Off of river front trail behind hotel

Popular and locally crafted carousel here as well www.carrousel.com

All of the below trails are close to downtown area

See Visitor's Center website for maps and access points:

www.missoulacvb.com/hiking/php

Kim Williams Nature Trail

Pattee Canyon Trail

Hellgate Canyon Trail

Blue Mountain Recreation Area

Rattlesnake Recreation and Wilderness Area

Missoula Parks & Recreation – Plenty of space for outdoor recreation

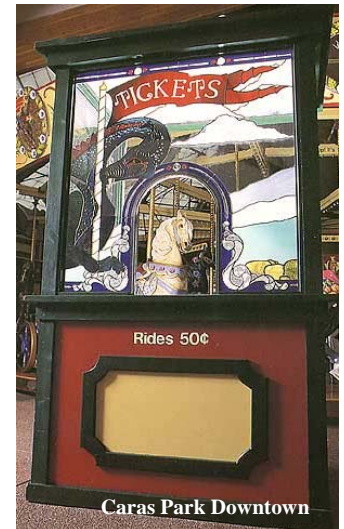
<http://www.ci.missoula.mt.us/parksrec/>

Missoula's Parks & Trails - Greenough Park is well-loved by Missoulians

<http://www.ci.missoula.mt.us/parksrec/park.htm>

Riverfront Self-Guided Bike Tour (and free "blue bikes" to borrow)

<http://www.ci.missoula.mt.us/parksrec/Trails/2007-05Self-Guided-Bike-Tour.pdf>



History/Local Highlights:

The Wilma – A historical theatre in downtown Missoula. Stories and legends about the Wilma abound in Missoula (and some are even true!). Catch a movie or live music.

<http://thewilma.com/>

Glacier National Park – A three-hour drive from Missoula, but well worth the trip!

Strongly advise to view the website and/or contact the park prior to making the drive. Often the main roads are closed in early spring due to snow.

<http://www.nps.gov/archive/glac/home.htm>

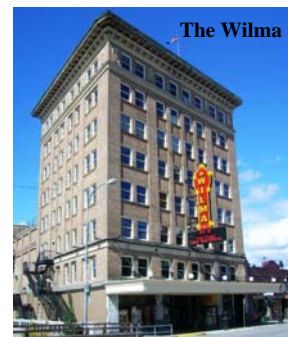
Fort Missoula – Historical Museum

Bldg 322 Ft. Missoula

www.fortmissoulamuseum.org

Rocky Mountain Elk Foundation Visitor's Center

www.rmef.org



Shopping/Unique Stores: There is no sales tax in Montana!

Enjoy the unique boutiques in downtown area...just take a walk along Higgins, can't miss them.

Rockin' Rudy's – local fav for music, gifts, jewelry...

237 Blaine St.

www.rockinrudys.com

Mall = Southgate Mall www.shopsouthgate.com

Missoula Breweries: *ordered by closest to hotel, to furthest away from hotel*

Kettlehouse Brewing Co.

602 Myrtle St. 406-728-1660

www.kettlehouse.com

Bayern Brewing Co.

1507 Montana St.

www.bayernbrewery.com

Big Sky Brewing Co. – Home of Moose Drool

5417 Trumpeter Way

www.bigskybrew.com



Restaurants & Popular Cafes:

Downtown Area (within walking distance from hotel):

Mackenzie River Pizza
www.mackenzieriverpizza.com
137 West Front St.

Sean Kelly's Pub
130 W. Pine St.

El Cazador
101 S. Higgins

The Depot (the "deck" is more casual dining)
201 West Railroad

Iron Horse Brew Pub
501 N. Higgins
www.ironhorsebrewpub.com

The Old Post Pub (live music every Thurs & Fri)
103 W. Spruce
www.oldpostpub.com

Ciao Mambo
541 S. Higgins
<http://www.ciaomambo.com/>

Zimorino's – Casual Italian
424 Higgins

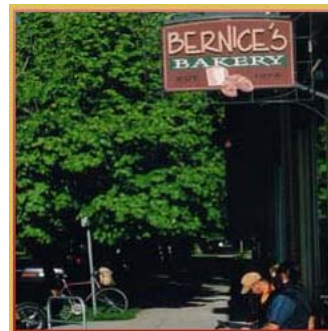
Red Bird- Fine Dining \$
120 W. Front #105
www.redbirdrestaurant.com

Pearl Cafe & Bakery – Fine Dining \$
231 E. Front St.

Worden's Market & Deli
451 N. Higgins – good for take out sandwiches
www.wordens.com

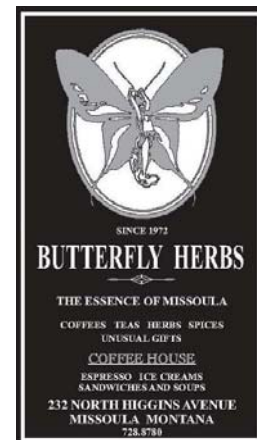
Coffee/Bakeries:

Bernice's Bakery – local favorite!
Short walk over the downtown bridge
190 S. 3rd West
www.bernicebakerymt.com



Liquid Planet – coffee, snacks, dessert
233 N. Higgins
www.liquidplanet.com

Butterfly Herbs – another fav for coffee
232 N. Higgins
www.butterflyherbs.com



Break Espresso
432 N. Higgins

Restaurants a Short Drive Away:

The Mustard Seed at Southgate Mall
www.mustardseedweb.com

The Montana Club – Lodge Style
4561 N. Reserve or 2620 Brooks
www.montanaclub.com