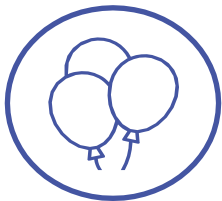




Advising Community on Graduate and Professional Students



## Welcome!

Happy Spring GPS Members and Friends!

My name is Katelyn Talbott and I am an academic advisor for the MS/Library and Information Science program in the School of Information Sciences at the University of Illinois Urbana-Champaign. I wanted to take this time to welcome you all to the NACADA Advising Community for Graduate and Professional Students!

I know we are an active group of professionals as shown by the interactions on the listserv, the number of Annual Conference proposals submitted through our community, and of course, through conversations and feedback from you! Working in a graduate setting comes with its own successes and challenges. We want this community to be your sounding board for ideas, supporters, and a space where you can gain ideas to iterate on your next project, workshop, or process. This year, our **goals** for the community are **three-fold**:

### Goal 1

Increase visibility of this AC to members and potential members

#### Action 1

If you know someone in your university or department who would benefit from joining our group, we encourage you to direct them to join our active listserv and attend upcoming professional development events.

### Goal 3

Benchmark our roles and responsibilities within the community

#### Action 3

Join us for our April GPS Talk Series (April 20th) Community: What Do We Need and How Can We Take Action? as we share more details about this project and how you can contribute to and support this project.

### Goal 2

Support those who want to expand their professional development opportunities and involvement

#### Action 2

Promote ways for involvement (conferences, surveys, feedback) and community building (GPS Talk Series, affinity groups, conference presentations).

## Contact Us

Advising Community on Advising Graduate & Professional Students

#### Current Community Chair:

[Katelyn Talbott](#), University of Illinois Urbana-Champaign

#### Newsletter Editors:

[Cherry Lacsina](#), University of Hawai'i at Mānoa

[Courtney Lewellen](#), Indiana University

[Summer Sibley](#), Texas A&M University

[Jamie Heck](#), University of Cincinnati

## 2022 Steering Committee

None of this work would be possible without the support of the Advising Community for Graduate and Professional Students Steering Committee! Please help me welcome our 2022 Steering Committee:

**Amanda Lager Gleason**  
Colorado State University

**Cherry Lacsina**  
University of Hawai'i at Mānoa

**Colleen Rose**  
Indiana University Bloomington

**Courtney Lewellen**  
Indiana University

**Jamie Heck**  
University of Cincinnati

**Jordan Wienke**  
Webster University

**Krista Smith**  
University of Florida

**Kristie Cansler**  
Hampton University

**Mark Nakamoto**  
University of Hawai'i at Mānoa

**Shabeer Hussain Amirali**  
University of Louisville

**Shannon Mark**  
University of Hawai'i at Mānoa

**Summer Sibley**  
Texas A&M University

**Dr. Katelyn Talbott**  
Advising Community on Graduate & Professional Students Chair

## Member Highlight

**Ginger Dickens**  
University of Texas at Arlington



Hello everyone! My name is Ginger (like the spice) Dickens (like the author). I'm an advisor to graduate students in the Department of Computer Science and Engineering (CSE) at the University of Texas at Arlington (UTA). My higher education career spans more than 15 years, and I have been in my current position since November 2017. The graduate CSE student population at UTA is predominantly international students, mostly from India but also from Nepal, China, a few from Iran, and a handful from other nations.

As a former study abroad student myself, my international experiences help me relate to and communicate with our international population.

I was recently introduced to NACADA and attended my first event in 2021. Wanting to get involved, I got my feet wet by volunteering to read conference proposals. Also, a fellow NACADA member from a nearby institution and I joined forces and co-presented at the NACADA Region 7 Conference in March 2022.

I live in the Dallas/Fort Worth metroplex with my husband and our three dogs. In my spare time I enjoy crafting with anything that has to do with paper. Some of the cards I have made have been sent to military personnel and friends of friends all over the world.

## Member Awards and Recognition

We want to showcase the amazing awards, honors, and recognitions of our members and friends! Please join me in congratulating:

**Diane Ronchetti Cooper**, Lesley University  
*2021 Impact Award at Lesley University*

**Michael (Joe) Jacobs**, University of North Carolina  
*2021 University Award for Advising Excellence*

**Melissa Hobgood**, University of North Carolina  
*University Staff Member of the Year 2021*

**Jennifer Moore**, University of North Carolina  
*Environmental Sciences & Engineering Employee Excellence Award 2022*

To recognize someone that has won an award, been honored, or received other achievements in our upcoming May newsletter, please email the winner's name, university, and award/honor/achievement details to [ktalbott@illinois.edu](mailto:ktalbott@illinois.edu).

## Professional Development Opportunities

The Advising Community on Graduate & Professional Students GPS (Graduate and Professional Student) Talk Series will host its first quarterly meeting of 2022! The focus of this April event will be "*Community: What Do We Need and How Can We Take Action?*". This event will be an introduction to the Advising Community and then guided discussions around the topic of creating community for those that work with graduate and professional students.

The GPS Talk is scheduled for **April 20 (Wednesday) from 2:00 p.m. – 3:00 p.m. Central Time**. Please register at [this link](#). Once registered, you will receive a confirmation email containing information on how to join the virtual meeting.



## Resource

This month's spotlight resource is the newly released book, "A Practitioner's Guide to Supporting Graduate and Professional Students." Contributed to by some members of our advising community, the book aims to provide tools and resources to those working directly with graduate and professional students. Spanning eleven chapters and covering topics such as an "Overview of Post-baccalaureate Student Needs," "Graduate Student Success and Socialization," and "Graduate Student Engagement and Campus Programming," the book provides strategies, case studies, and an overall understanding of our diverse population. To learn more and access the book, check it out [here](#).

## Get Connected

**Follow us on Facebook:**

<https://www.facebook.com/gradadvising/>

**Follow us on LinkedIn:**

<https://www.linkedin.com/groups/12075130/>

**Subscribe to our Listserv:**

[listserv@listserv.ksu.edu](mailto:listserv@listserv.ksu.edu)

**Bookmark our webpage:**

<https://nacada.ksu.edu/Community/Advising-Communities/Advising-Graduate-Professional-Students.aspx>