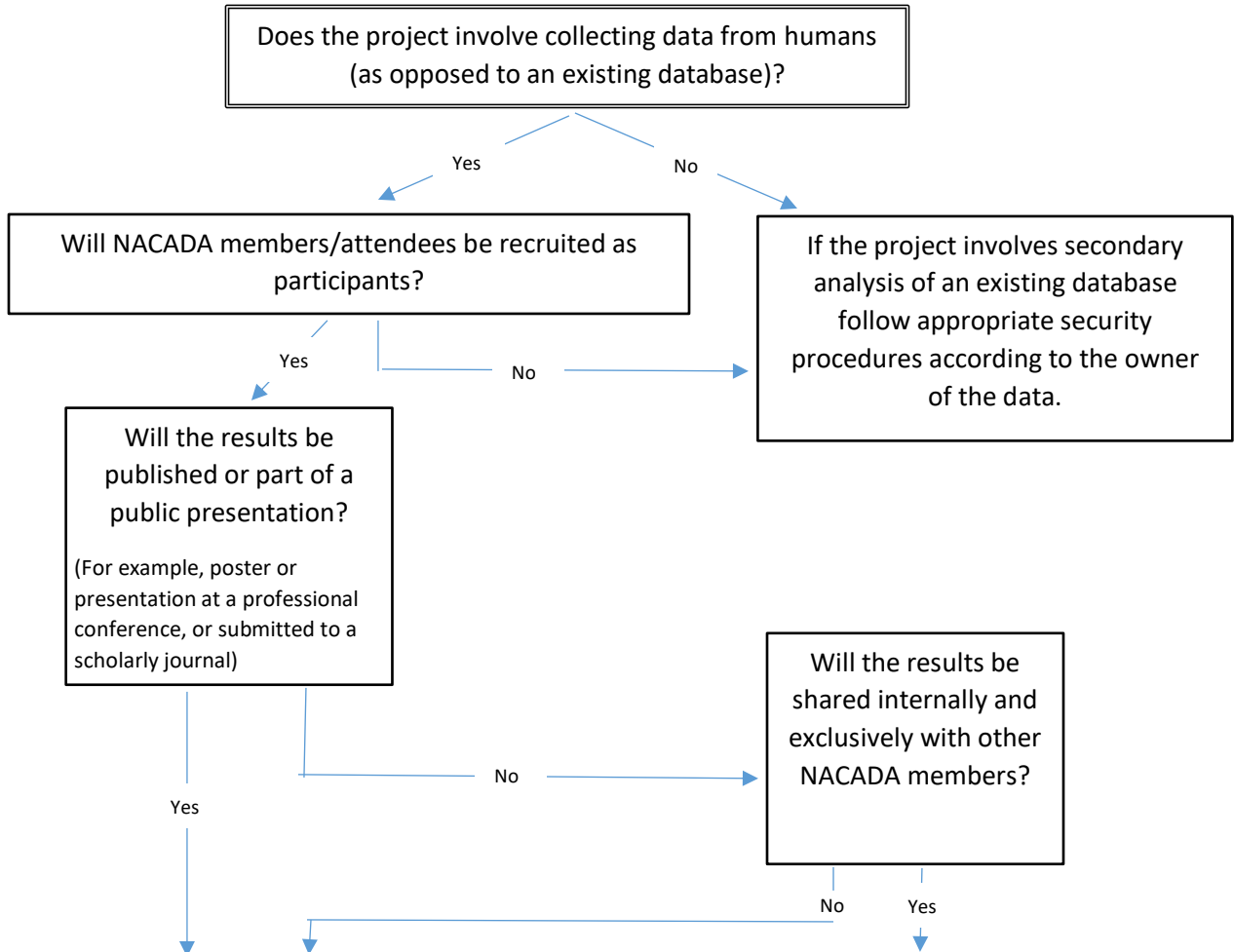


Research Project involving NACADA Members and Data Decision Tree



Required: The project must follow federal and institutional guidelines for research with human subjects (at the researcher's sponsoring institution) and be reviewed and approved by the **NACADA Research Committee** (see procedures and requirements at <http://www.nacada.ksu.edu/Resources/Research-Related/MemberSurveys.aspx>)

Note: Researchers should also consider working with, or at least informing, the appropriate NACADA committee, commission, interest group, or advisory board for professional input on the scope and purpose of the study. (This step is not required, but rather considered a professional courtesy.)

Required: Projects conducted to provide feedback for information and improvement of NACADA programs and services must be reviewed at the highest level relevant to the purpose and scope of the study.

Examples include, but are not limited to:

| Project example: | Reviewed by: |
|--|--|
| An evaluation form for an event | Respective organizing committee and/or advisory board |
| A survey assessing the professional development needs for next year's statewide meetings | State leadership committee |
| Focus groups conducted within a region about perceptions of diversity and equity within their own institutions for the purpose of future programming at the region level | Region leadership committee, but should also involve the NACADA Inclusion & Engagement Committee |
| A survey within a region about professional development needs across the NACADA association as a whole | Region leadership committee AND the association leadership (and relevant committees, CIGs, and/or advisory boards) |